

[illegible]

Pos.-Nr.	Bezeichnung	Material	Expositionsklasse
D-100	Stb. Decke, h = 26 cm	C30/37, B 500A	XCI, WO
P2	Treppendecken h = 26 cm	C30/37, B 500B	XCI, WO
S-101	Stb. Stütze, bh = 20/20 cm	C30/37, B 500B	XCI, WO
S-102	Stb. Stütze, bh = 25/20 cm	C30/37, B 500B	XCI, WO
S-103	Stb. Stütze, bh = 25/25 cm	C30/37, B 500B	XCI, WO
T-102	Stahlträger	S235	XCI, WO
T3.2	FT - Treppentafel, h = 20 cm	C30/37, B 500B	XCI, WO
T3.3	FT - Treppentafel, h = 20 / 26 cm	C30/37, B 500B	XCI, WO
U-101	Stb. Unterzug, bh = 20/50 cm	C30/37, B 500B	XCI, WO
U-102	Stb. Unterzug, bh = 25/50 cm	C30/37, B 500B	XCI, WO
U-103	Stb. Unterzug, bh = 25/50 cm	C30/37, B 500B	XCI, WO
U-104	Stb. Unterzug, bh = 20/50 cm	C30/37, B 500B	XCI, WO
U-105	Stb. Unterzug, bh = 20/50 cm	C30/37, B 500B	XCI, WO
U-106	Stb. Unterzug, bh = 20/50 cm	C30/37, XCI	WO
U-107	Stb. Unterzug, bh = 25/50 cm	C30/37, B 500B	XCI, WO
U-108	Stb. Unterzug, bh = 25/50 cm	C30/37, B 500B	XCI, WO
U-109	Tragstreifen, bh = 40/26 cm	C30/37, B 500B	XCI, WO
W-101	Stb. Wand, l = 20 cm	C25/30, B 500A	XCI, WO
W-102	Stb. Wand, l = 20 cm	C25/30, B 500A	XCI, WO
W-103	Stb. Wand, l = 20 cm	C25/30, B 500A	XCI, WO
W-104	Stb. Wand, l = 20 cm	C25/30, B 500A	XCI, WO
W-105	Stb. Wand, l = 20 cm	C25/30, B 500A	XCI, WO
W-106	Stb. Wand, l = 20 cm	C25/30, B 500A	XCI, WO
W-107	Stb. Wand, l = 20 cm	C25/30, B 500A	XCI, WO
W-108	Stb. Wand, l = 20 cm	C25/30, B 500B	XCI, WO
W-109	Stb. Wand, l = 20 cm	C25/30, B 500B	XCI, WO
W-110	Stb. Wand, l = 20 cm	C25/30, B 500B	XCI, WO
W-111	Stb. Wand, l = 20 cm	C25/30, B 500B	XCI, WO
W-112	Stb. Wand, l = 20 cm	C25/30, B 500B	XCI, WO
W-113	Stb. Wand, l = 20 cm	C25/30, B 500B	XCI, WO
WT-101	Wandträger Träger, l = 20 cm	C30/37, B 500B	XCI, WO
WT-102	Wandträger Träger, l = 20 cm	C30/37, B 500B	XCI, WO
A-W1 bis A-W4	Ausstellungselemente	C25/30, B 500A	XCI, WO

The technical drawing illustrates the connection between a horizontal beam and a vertical post. The top part shows a cross-section where a horizontal beam is bolted to a vertical post. Dimensions include a total width of 15 mm, with segments of 7 mm, 6 mm, and 2 mm. A double lap joint (Doppelkehlnaht) with a 6 mm gap is shown at the top. The bottom part shows a side view of the same assembly, highlighting the vertical post's dimensions: a height of 1.82 m, a diameter of 50 mm, and a wall thickness of 6 mm. The post is labeled as Hilti Ista IV-270DA - M12, heftl = 150 mm, e = 50 cm. The horizontal beam is identified as L-Winkel 260X150X25 mm, S235. Other labels include Stahlwange U280, S235 and Doppelkehlnaht 6 mm.

15
7 8

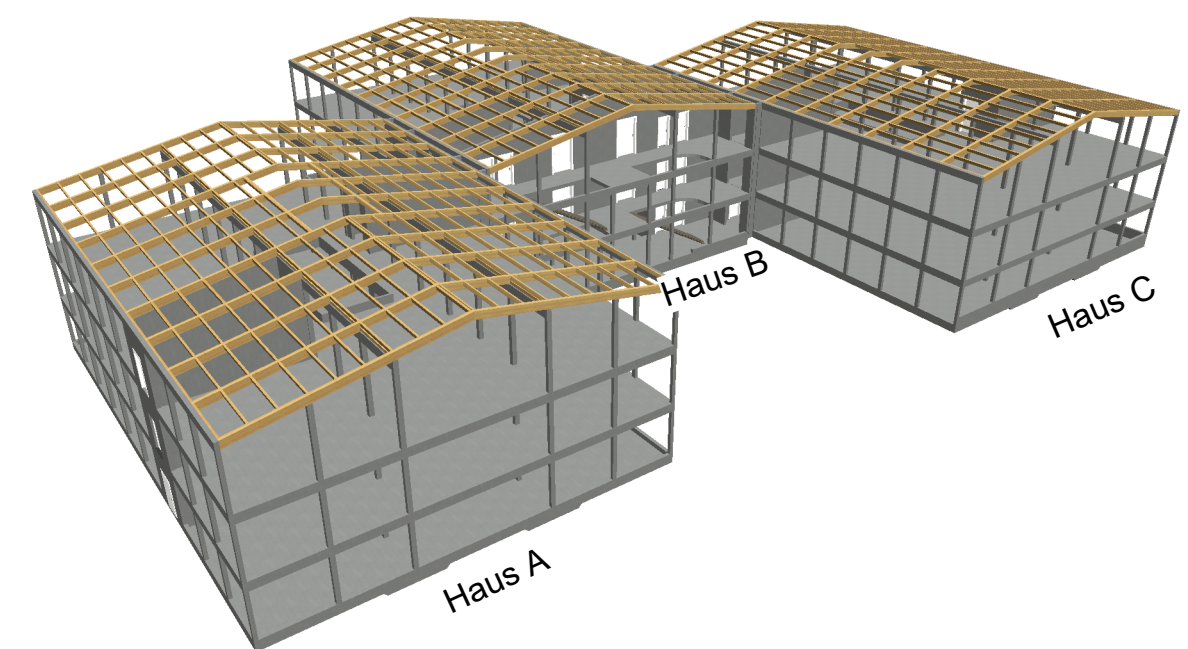
Hilti HIT HY-200A-M12
heft = 150 mm, \varnothing = 50 cm

Stahlwange U280, S235

Doppelkehlnaht 6 mm

L-Winkel 260X150X25 mm, S235

P07 | _



Projektnummer	Maßstab	Datum	Gezeichnet	Planstand	Leistungsphase	Plan Nr.	Index
P25-022	1:50	11.12.2025	ao	10.04.2026	LPH4	P07	